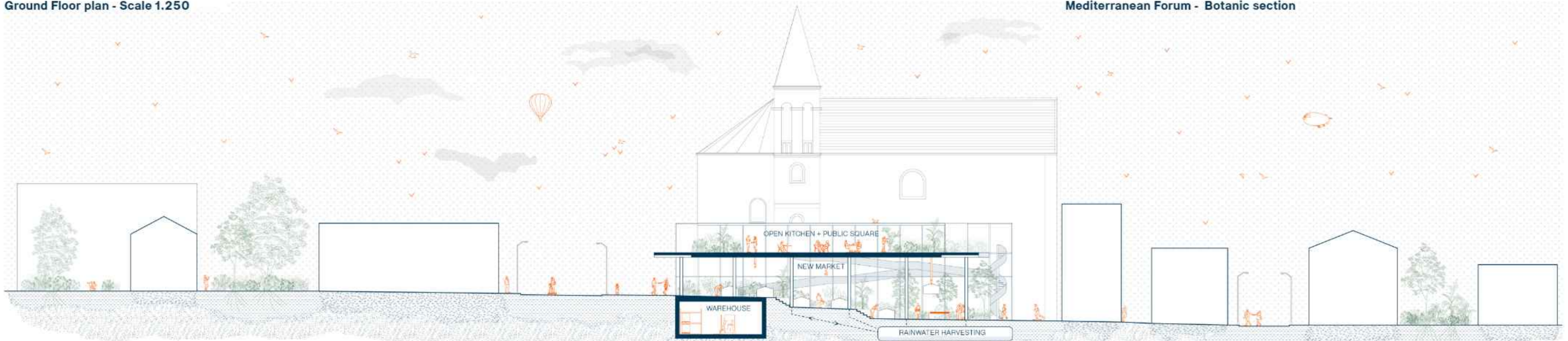
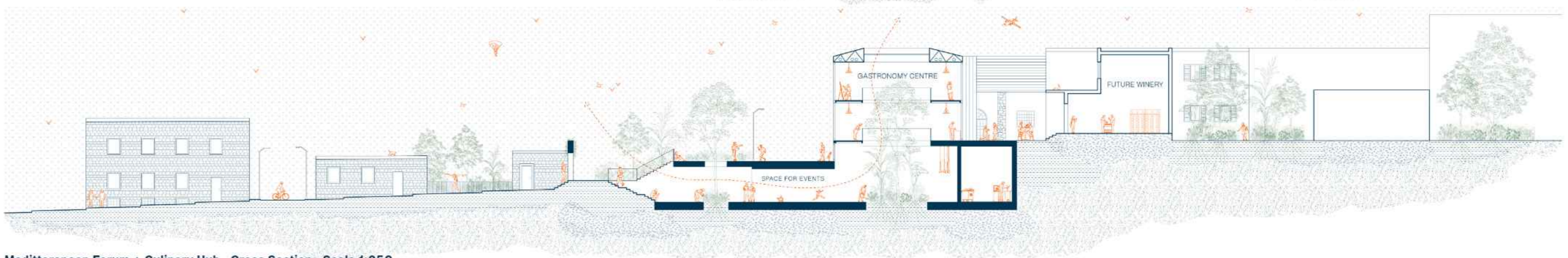


Ground Floor plan - Scale 1.250



OpenFlow Market - Cross Section - Scale 1.250



Mediterranean Forum + Culinary Hub - Cross Section - Scale 1:250

1 The **OpenFlow Market** directly rests on the existing terraced structures without altering their configuration. It is covered by an accessible public canopy that transforms into a new public square. The market is organized with easily movable modular structures supported by an overhead system, allowing for versatile space arrangements to host cultural or sporting events, offering various future scenarios. All technical elements, such as stairs, ramps, elevators, and restrooms, are housed within a separate "open structure" that identifies and encloses these facilities.

The **Culinary Hub** involves the restoration of the old fish market, transforming it into a retail space for local food sales and respecting the pre-existing structure. A new culinary centre is designed to integrate with adjacent winery and restaurant functions, forming a culinary district with a central food-tasting square. Belowground, a large area for cultural events is directly connected to site 3 through a unique underground building, promoting a close link between the two neighbouring sites and establishing a cultural hub for various gatherings.

The **Mediterranean Forum** is a food garden for outdoor dining and cultural events featuring urban gardens for educational experiences. With a focus on permeability, it creates micro-habitats for the local fauna while a direct connection to the Culinary Hub in site 02 through an underground cultural and artistic event space enhances accessibility and interactions between the two areas.

2
3

Declinations of the Mediterranean garden

Aromatic plants

Aromatic plants have innumerable qualities, such as fragrant flowering, aiding in creating a habitat for fauna and being edible. The garden of aromatic plants is designed in connection with enogastronomic workshops and activities.



- Allium schoenoprasum
- Anethum graveolens
- Angelica archangelica
- Artemisia dracunculoides
- Borago officinalis
- Calendula officinalis
- Cichorium intybus
- Hyssopus officinalis
- Monarda didyma
- Ocimum basilicum 'Cinnamon'
- Origanum 'Kent Beauty'
- Rosmarinus officinalis
- Santolina chamaecyparissus
- Symphytum officinale
- Thymus citriodorus

Perennial and rustic plants

Rustic plants are optimal for contemporary gardens with contrasting coloured patches with different heights. As perennials, they have an optimal presence even in the cold seasons and self-sow.



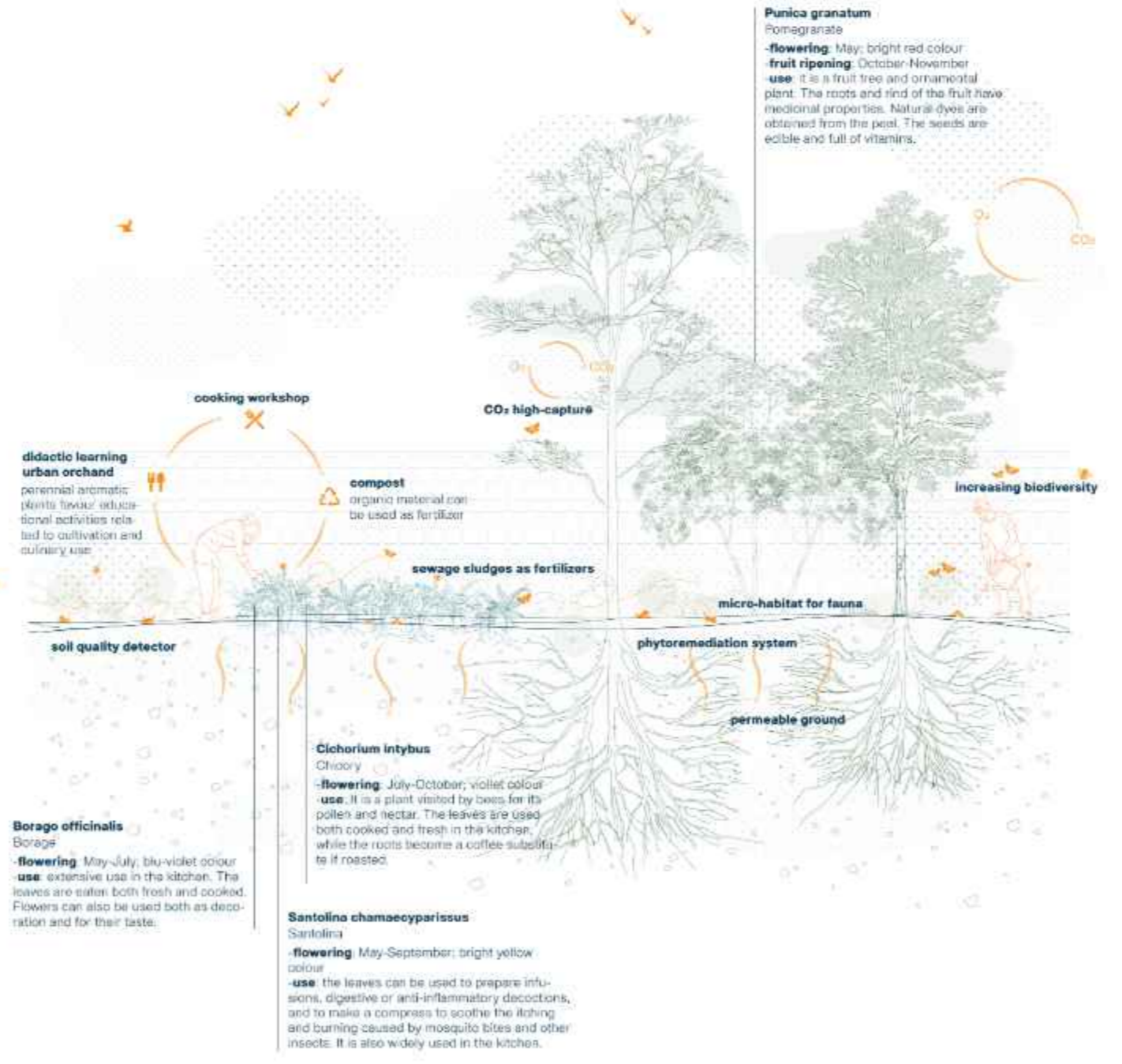
- Allium 'Purple Sensation'
- Anemone lessoniana
- Anthemis tinctoria
- Artemisia 'Powis Castle'
- Echinops ritro
- Geranium sanguineum
- Lavandula angustifolia
- Myrtus communis
- Nepeta racemosa
- Perennisetum villosum
- Perovskia atriplicifolia 'Blue Spire'
- Sanguisorba officinalis
- Santolina chamaecyparissus
- Veronica austriaca

Trees

The trees are optimal for a Mediterranean and coastal environment and urban areas. Some also have a productive vocation linked to enogastronomic activities.



- Celtis australis
- Olea europaea
- Laurus nobilis
- Magnolia grandiflora
- Punica granatum
- Quercus ilex



Mediterranean Forum - Botanic section