

▲ CULTURAL SQUARE & GASTRONOMY CENTRE



PANORAMIC TERRACE
 The ascending path ends with a panoramic terrace that reconnects the new intervention with the surrounding landscape, opening up towards the sea. The mesh roof descends along the walls, becoming an element for the solar protection of the façade.



KITCHEN & PRESENTATION SPACE
 Is organized as a flexible mediation space between the open kitchen, in direct connexion with the city, and the outdoor garden space towards which it expands visually and functionally to accommodate different events and scenarios.



TREE GARDEN
 The decision to maintain the existing pine tree allows to create a quality open space, used in connection with the center of Mediterranean gastronomy and integrated with a vegetable garden for the production of local products.



TASTING & CLASSROOM
 The building of the old fish market houses a multi-purpose hall for tastings, cooking demonstrations and lessons for the tourism school. It becomes a space for tasting and studying the history of Mediterranean gastronomy, in direct contact with its heritage.



UNDERGROUND PARKING - 81 PARK
 The entrance to the underground car park is located in the southern part of the project area. It develops through two levels below the gastronomy centre and the cultural centre, connecting them and providing 80 parking stalls. The exit is located in the northern part of the project area, limiting the passage of cars in the proximity of the pedestrian crossing.



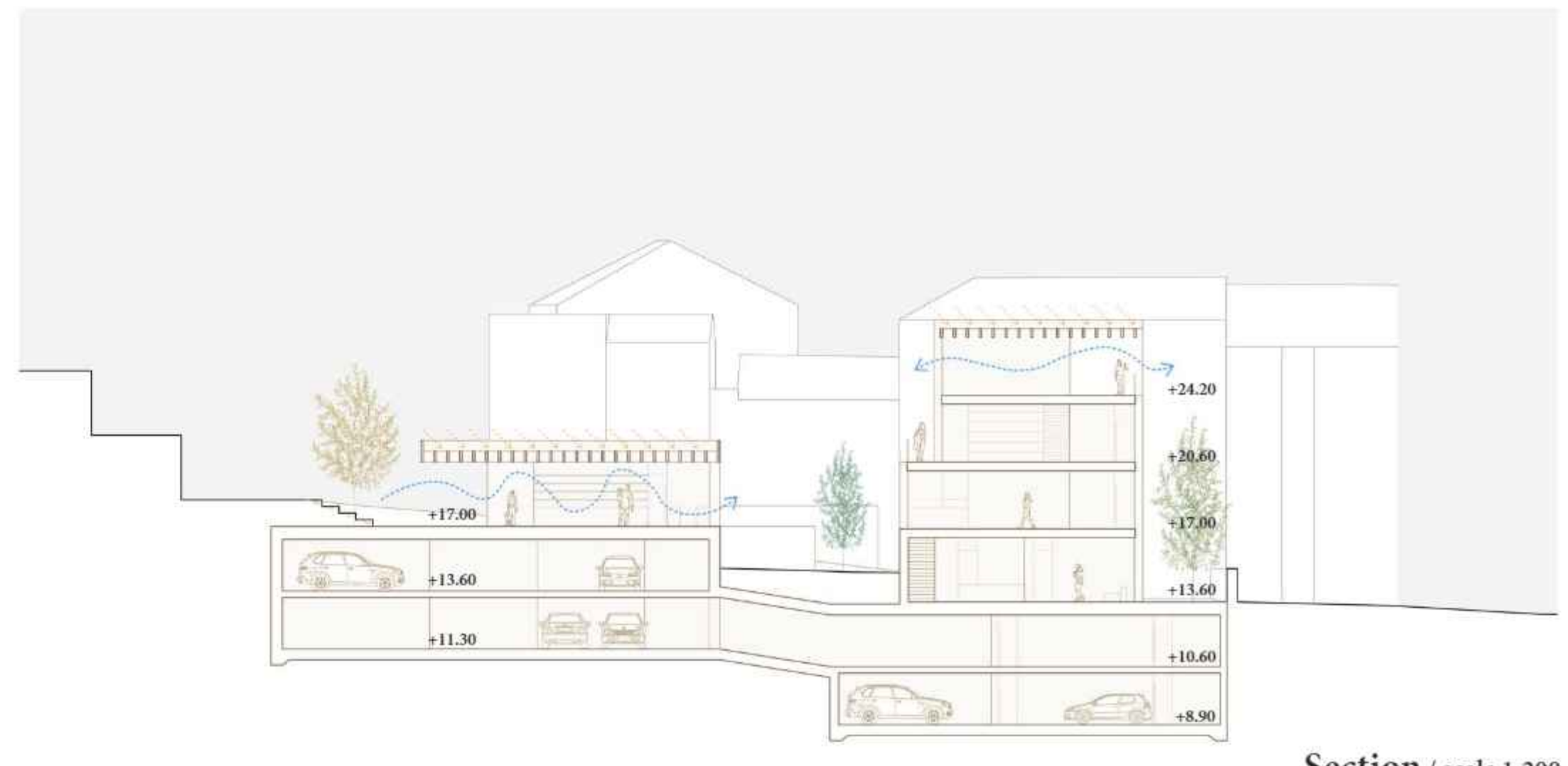
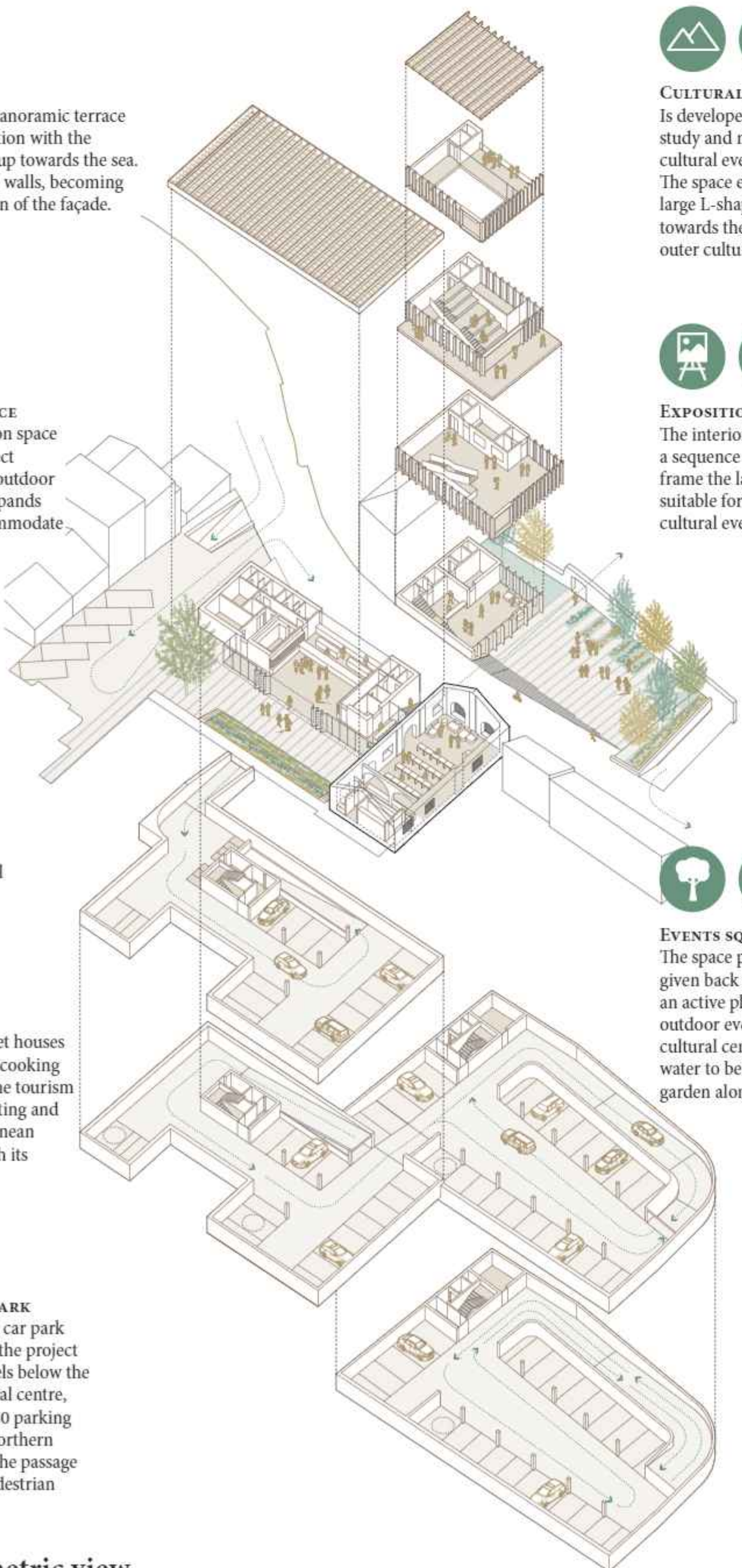
CULTURAL STAIRCASE
 Is developed as a double-height space for study and meeting, which can be used for cultural events, talks, exhibitions. The space expands outwards through a large L-shaped terrace that allows a view towards the Biokovo mountain and the outer cultural space.



EXPOSITION SPACE
 The interior space is developed through a sequence of staircases that in their path frame the landscape and connect spaces suitable for exhibitions, performances and cultural events.



EVENTS SQUARE
 The space previously used as a car park is given back to the community, becoming an active place that can be used for outdoor events linked to the lobby of the cultural center. Drainage paving allows water to be collected to irrigate the herb garden along the old wall.



Functional axonometric view

Section / scale 1:200